

# Moulding Guide

LAST UPDATED FEBRAURY 27, 2025



**Drexel**<sup>™</sup>  
MILLWORK & DOORS

# About Drexel Millwork & Doors



**People don't buy WHAT you do. They buy WHY you do it.**

**HISTORY** | Different from our competition, Drexel Millwork & Doors (DMD) launched vertical integration within Drexel Building Supply in 2022. From one location in 1985 to nine locations in 2024, our mission has stayed consistent: supply happiness.

**WHY** | Our "why" is aligned around two important things:

- 1. Our mission to supply. happiness.**
- 2. All eleven of our core values:**

**ETHICS | WINNING ATTITUDE | RESPECT | DEVELOPMENT | ACCOUNTABILITY |  
BALANCE | TEAMWORK | COMMUNICATION | CHANGE | HAVE FUN | CONNECTION**

**WHAT** | From wood species, profiles, prefinishing options, and much, MUCH more, we'll help you find exactly what you're looking for.

**supply. happiness.**

## Table of Contents

<b>Base</b>	<b>3-6</b>
<b>Casing</b>	<b>7-9</b>
<b>Crown</b>	<b>10-11</b>
<b>Miscellaneous</b>	<b>12-13</b>
<b>Boards</b>	<b>14-15</b>

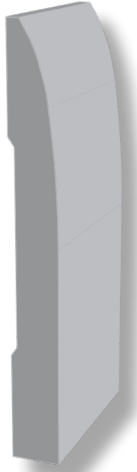
All wood moulding orders are subject to a +/- variance of 15% over or under ordered quantities. The invoice will reflect the quantity shipped.

**Random Length Wood Mouldings will be shipped based on breakdown below:**

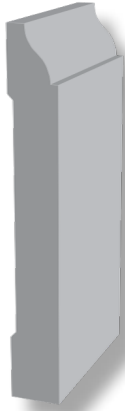
CASING & STOP:	Shipped 3' - 16', the % breakdown is:	
	3' - 12'	85%
	13' - 16'	15%

BASE:	Shipped 3' - 16', the % breakdown is:	
	3' - 12'	75%
	13' - 16'	25%
Specified Length:	3' - 9' 15% Upcharge	
Subject to Availability:	10' - 12' 20% Upcharge	
	12' - 16' 30% Upcharge	

## Ranch & Colonial Base



**DMD - 723** -  $\frac{3}{8}$ " x  $3\frac{1}{4}$ "  
O



**DMD - 634** -  $\frac{3}{8}$ " x  $2\frac{3}{4}$ "  
M,O

**DMD - 634** -  $\frac{3}{8}$ " x 3"  
FJP 16' PC



**DMD - 633** -  $\frac{3}{8}$ " x  $3\frac{1}{4}$ "  
M,O,POP - *RTS*

**DMD - 633** -  $\frac{3}{8}$ " x  $3\frac{1}{4}$ "  
FJPOP, FJP 16' PC - *RTS*



**DMD - 623** -  $\frac{1}{2}$ " x  $3\frac{1}{4}$ "  
MDF 16' PC - *RTS*

**DMD - 623** -  $\frac{9}{16}$ " x  $3\frac{1}{4}$ "  
FJP 16' PC



**DMD - 620** -  $\frac{7}{16}$ " x  $4\frac{1}{4}$ "  
O - *RTS*

**DMD - 620** -  $\frac{1}{2}$ " x  $4\frac{1}{4}$ "  
MDF 16' PC

**DMD - 620** -  $\frac{9}{16}$ " x  $4\frac{1}{4}$ "  
FJP 16' PC

M - Maple  
O - Oak  
POP - Poplar  
FJP - FJ Primed Pine  
FJPOP - FJ Primed Poplar  
MDF - Ultra-Lite Primed MDF

PC - Pieces  
LF - Lineal Foot  
*RTS* - Ready To Ship

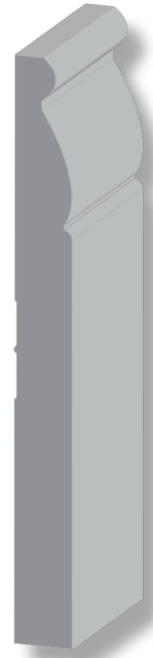
# Base



**DMD - 20136** - 9/16" x 4¼"  
MDF 16' PC



**DMD - 2808** - 9/16" x 4¼"  
FJP 16' PC



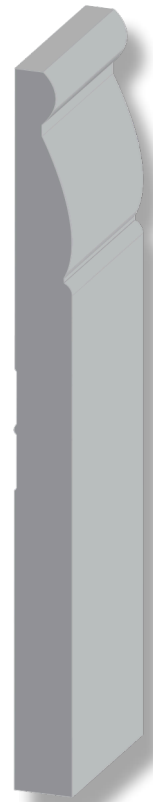
**DMD - 738** - 5/8" x 4¼"  
POP - RTS



**DMD - 808** - 9/16" x 4¼"  
MDF - RTS



**DMD - 163** - 9/16" x 5¼"  
MDF 16' PC



**DMD - 2813** - 9/16" x 5¼"  
FJP 16' PC

## Round Edge Base



**DMD - 434** -  $\frac{3}{8}$ " x  $2\frac{3}{4}$ "  
M,POP



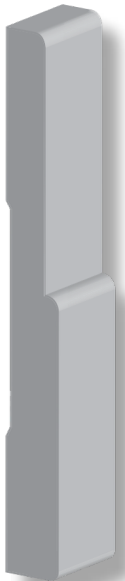
**DMD - 433** -  $\frac{1}{2}$ " x  $3\frac{1}{4}$ "  
MDF 16' PC - *RTS*

**DMD - 433** -  $\frac{3}{8}$ " x  $3\frac{1}{4}$ "  
M,O,POP - *RTS*

**DMD - 433** -  $\frac{7}{16}$ " x  $3\frac{1}{4}$ "  
FJP 16' PC - *RTS*



**DMD - 314** -  $\frac{5}{8}$ " x  $3\frac{1}{4}$ "  
POP

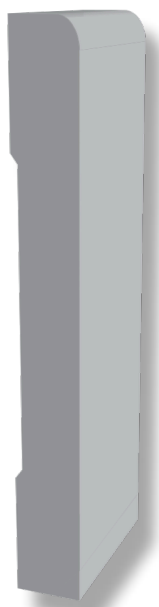


**DMD - 213** -  $\frac{7}{16}$ " x 4"  
M,POP

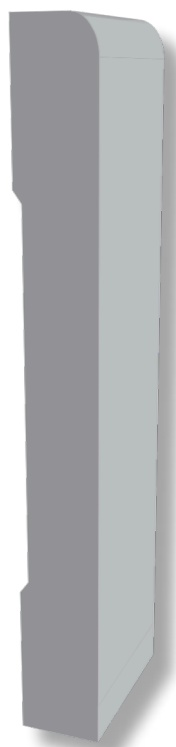
M - Maple  
O - Oak  
POP - Poplar  
FJP - FJ Primed Pine  
FJPOP - FJ Primed Poplar  
MDF - Ultra-Lite Primed MDF

PC - Pieces  
LF - Lineal Foot  
*RTS* - Ready To Ship

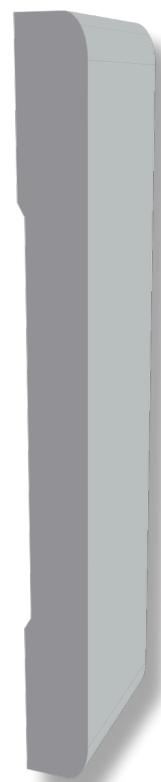
# Base



**DMD - 414** -  $\frac{5}{8}$ " x  $4\frac{1}{4}$ "  
M - *RTS*



**DMD - 514** -  $\frac{1}{2}$ " x  $5\frac{1}{4}$ "  
MDF



**DMD - 430LM** -  $\frac{9}{16}$ " x  $5\frac{1}{2}$ "  
MDF 16' PC

**DMD - 430** -  $\frac{7}{16}$ " x  $4\frac{1}{4}$ "  
FJP 16' PC - *RTS*

**DMD - 514** -  $\frac{5}{8}$ " x  $5\frac{1}{4}$ " M

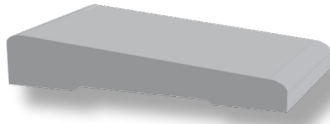
**DMD - 430** -  $\frac{1}{2}$ " x  $4\frac{1}{4}$ "  
M  
O,POP - *RTS*

**DMD - 430** -  $\frac{1}{2}$ " x  $4\frac{1}{4}$ "  
MDF 16' PC - *RTS*

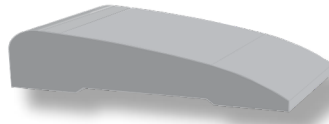
**DMD - 2982** -  $\frac{1}{2}$ " x  $4\frac{1}{4}$ "  
FJPOP - *RTS*

# Casing

## Ranch Casing



**DMD - 324** - ½" x 2¼"  
O 7' PC & LF - *RTS*

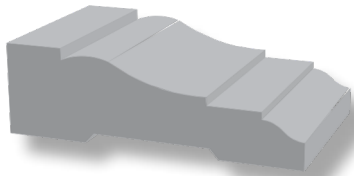


**DMD - 327** - 11/16" x 2¼"  
FJP 7' & 14' PC - *RTS*

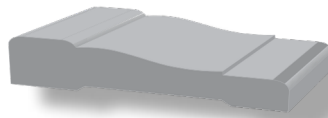
M - Maple  
O - Oak  
POP - Poplar  
FJP - FJ Primed Pine  
FJPOP - FJ Primed Poplar  
MDF - Ultra-Lite Primed MDF

PC - Pieces  
LF - Lineal Foot  
*RTS* - Ready To Ship

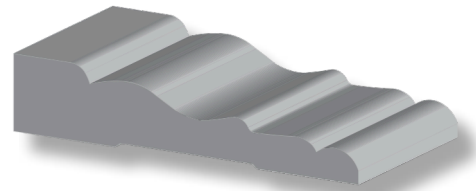
## Colonial Casing



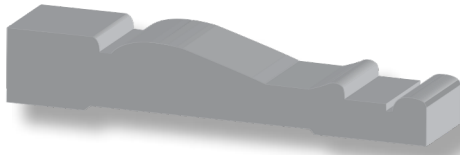
**DMD - 366** - 11/16" x 2¼"  
FJP 7' & 14' PC



**DMD - 356** - ½" x 2¼"  
M,O,POP 7' PC & LF - *RTS*



**DMD - 71** - 9/16" x 2¾"  
M,POP 7'-3" PC & LF

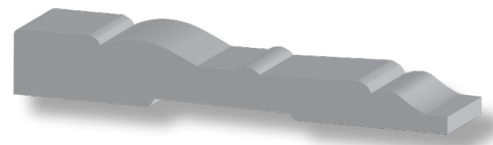


**DMD - 42** - 9/16" x 3¼"  
M 7'-6" PC & LF - *RTS*  
O 7'-6" - *RTS*

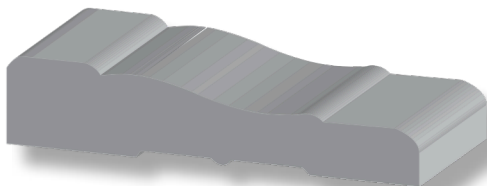
**DMD - 356** - 5/8" x 2¼"  
MDF 7' & 14' PC - *RTS*

**DMD - 356** - 11/16" x 2¼"  
FJP 7' & 14' PC - *RTS*

**DMD - 9000** - ½" x 2¼"  
FJPOP 7' & 14' PC - *RTS*

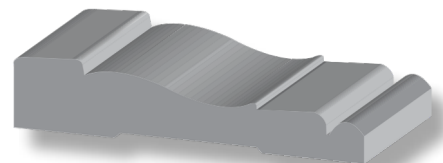


**DMD - 443** - 9/16" x 3¼"  
O 7'-6" PC & LF

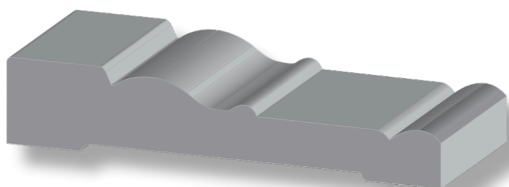


**DMD - 444** - 11/16" x 3¼"  
FJP 16' PC - *RTS*

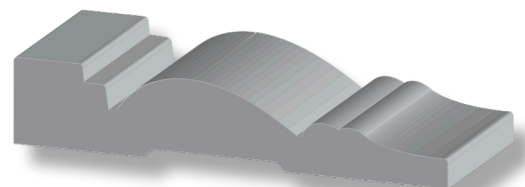
**DMD - 444** - 11/16" x 3¼"  
MDF 7'-6" & 16' PC



**DMD - MC47** - ¾" x 3¼"  
POP 7'-6" PC & LF - *RTS*



**DMD - 24112 C** - 11/16" x 3½"  
MDF 16' PC - *RTS*



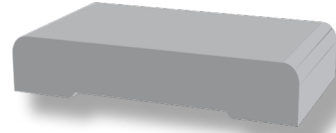
**DMD - 24112 P** - 11/16" x 3½"  
MDF 16' PC

# Casing

## Round Edge Casing



**DMD - 493L** -  $7/16"$  x  $2\frac{1}{4}"$   
POP 7' PC & LF



**DMD - 493** -  $\frac{1}{2}"$  x  $2\frac{1}{4}"$   
M,O,POP 7' PC & LF - RTS



**DMD - 473** -  $9/16"$  x  $2\frac{1}{4}"$   
FJP 7' & 14' PC - RTS



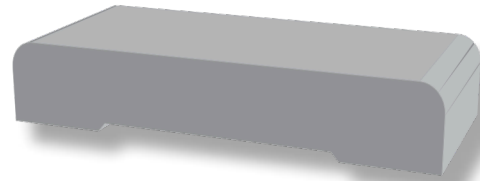
**DMD - 472** -  $9/16"$  x  $2\frac{1}{2}"$   
FJP 16' PC

**DMD - 473** -  $19/32"$  x  $2\frac{1}{4}"$   
MDF 7'-6" & 15' PC

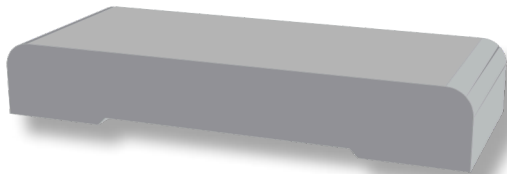
**DMD - 472** -  $19/32"$  x  $2\frac{1}{2}"$   
MDF 8' & 16' PC - RTS



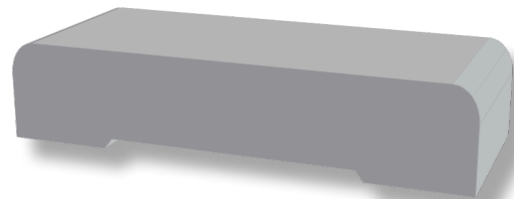
**DMD - 234** -  $\frac{3}{4}"$  x  $2\frac{3}{4}"$   
POP 7'-6" PC & LF



**DMD - 413** -  $\frac{5}{8}"$  x  $3\frac{1}{4}"$   
M 7'-6" PC & LF  
O,POP 7'-6" PC & LF - RTS



**DMD - 432M** -  $7/16"$  x  $3\frac{1}{2}"$   
MDF 16' PC



**DMD - 14E2ELM** -  $11/16"$  x  $3\frac{1}{2}"$   
MDF 16' PC - RTS

**DMD - 432P** -  $9/16"$  x  $3\frac{1}{2}"$   
FJP 16' PC

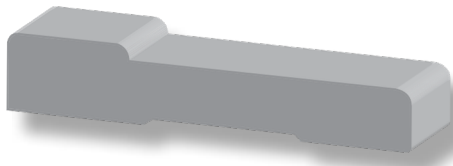
**DMD - 412** -  $\frac{3}{4}"$  x  $3\frac{1}{2}"$   
M 7'-6" PC & LF

**DMD - 433** -  $9/16"$  x  $3\frac{1}{4}"$   
FJPOP 7'-6" & 16' PC - RTS

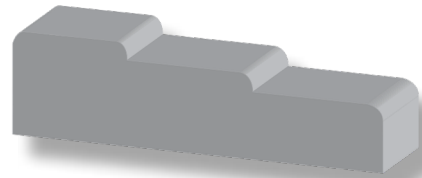


# Casing

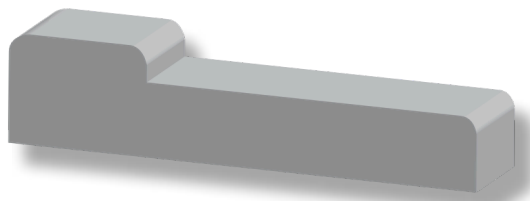
## Modern Casing



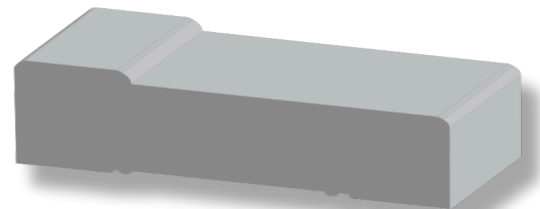
**DMD - 109** - 1/2" x 2 3/4"  
M, POP 7'-6" PC & LF



**DMD - 234** - 3/4" x 2 3/4"  
POP 7'-6" PC & LF



**DMD - 300** - 3/4" x 3"  
M 8' PC & LF - *RTS*

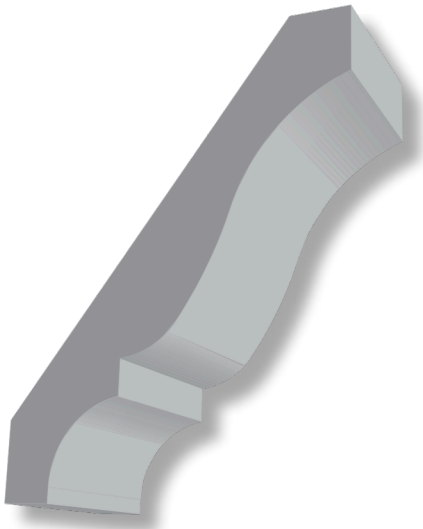


**DMD - 421** - 1 1/16" x 3 3/4"  
MDF 16' PC - *RTS*

M - Maple  
O - Oak  
POP - Poplar  
FJP - FJ Primed Pine  
FJPOP - FJ Primed Poplar  
MDF - Ultra-Lite Primed MDF

PC - Pieces  
LF - Lineal Foot  
*RTS* - Ready To Ship

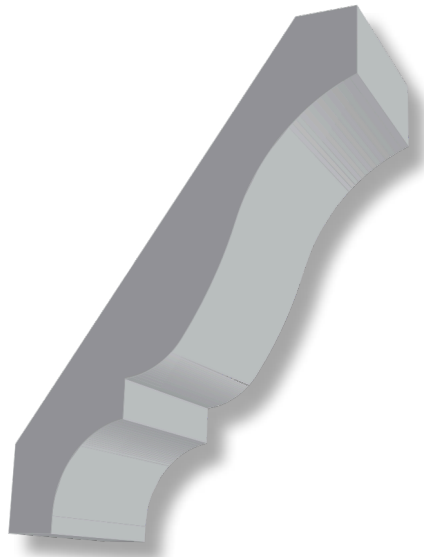
# Crown



**DMD - 51** -  $9/16"$  x  $3\frac{1}{4}"$   
FJP 16' PC - *RTS*

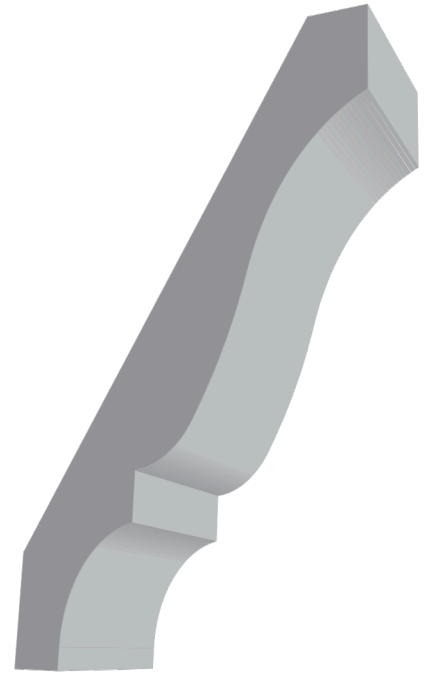
**DMD - 51** -  $3/4"$  x  $3\frac{1}{4}"$   
O,POP LF - *RTS*

**DMD - 51** -  $5/8"$  x  $3\frac{5}{16}"$   
MDF 16' PC

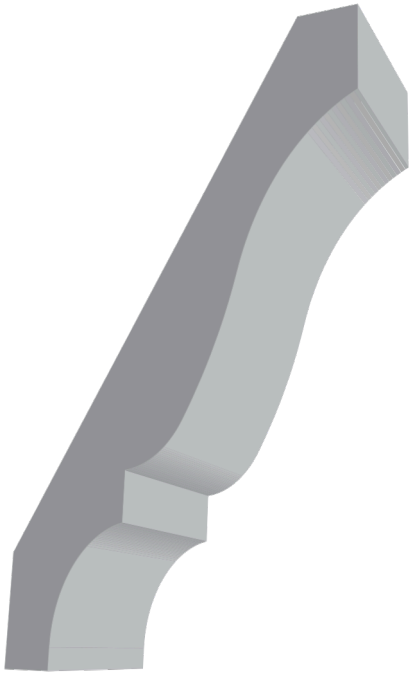


**DMD - 49** -  $9/16"$  x  $3\frac{9}{16}"$   
MDF 16' PC

**DMD - 49** -  $9/16"$  x  $3\frac{5}{8}"$   
FJP 16' PC



**DMD - 48** -  $5/8"$  x  $4\frac{1}{4}"$   
POP LF - *RTS*



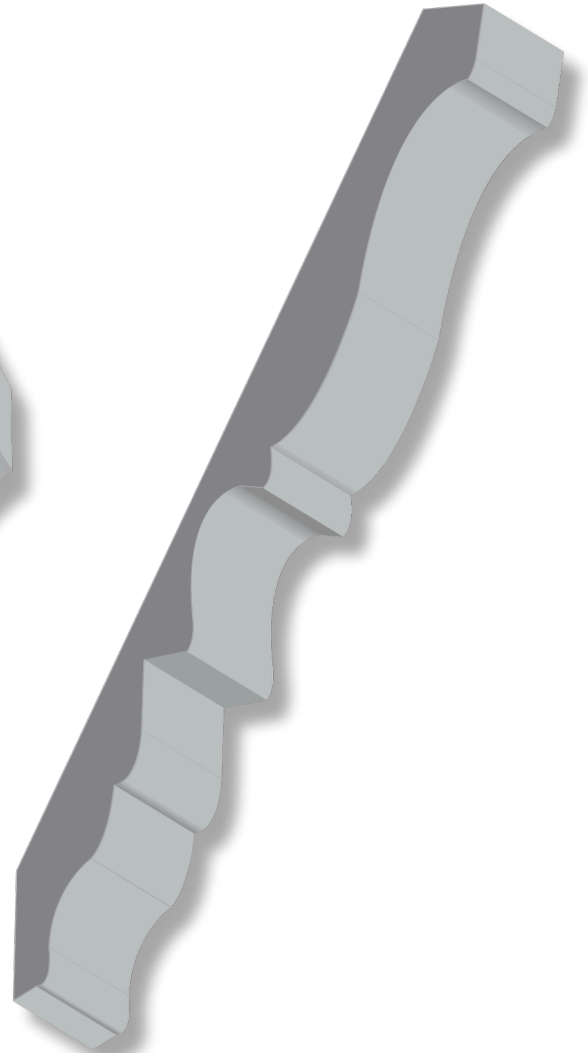
**DMD - 47** - 9/16" x 4<sup>9</sup>/<sub>16</sub>"  
FJP 16' PC

**DMD - 47** - 9/16" x 4<sup>5</sup>/<sub>8</sub>"  
MDF 16' PC

**DMD - 47** - 11/16" x 4<sup>5</sup>/<sub>8</sub>"  
O, M LF



**DMD - 45** - 9/16" x 5<sup>1</sup>/<sub>4</sub>"  
FJP, MDF 16' PC



**DMD - 27** - 11/16" x 6<sup>7</sup>/<sub>8</sub>"  
MDF 16' PC

M - Maple  
O - Oak  
POP - Poplar  
FJP - FJ Primed Pine  
FJPOP - FJ Primed Poplar  
MDF - Ultra-Lite Primed MDF

PC - Pieces  
LF - Lineal Foot  
RTS - Ready To Ship

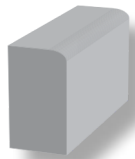
# Miscellaneous

## Backband

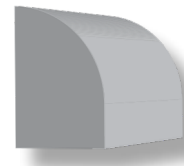


**DMD - 4422** -  $\frac{3}{4}$ " Rabbet  
11/16" x 1 $\frac{1}{2}$ "  
POP LF

## Base Shoe

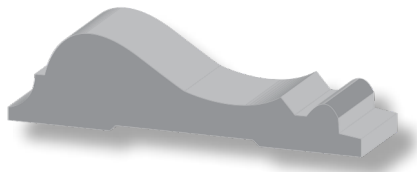


**DMD - 254** - Craftsman  
7/16" x  $\frac{3}{4}$ "  
FJP 16' PC - RTS



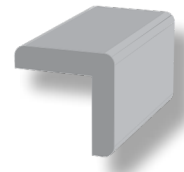
**DMD - 126** -  $\frac{1}{2}$ " x  $\frac{3}{4}$ "  
M,O,POP LF - RTS  
FJP,FJPOP 16' PC - RTS

## Chair Rail



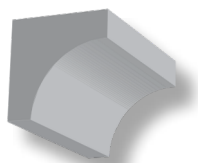
**DMD - 390** - 11/16" x 2 $\frac{5}{8}$ "  
FJP 16' PC

## Corner Guard

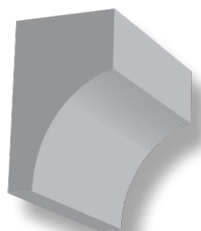


**DMD - 206** -  $\frac{3}{4}$ " x  $\frac{3}{4}$ "  
O 8' PC

## Cove



**DMD - 93** -  $\frac{3}{4}$ " x  $\frac{3}{4}$ "  
O 8' PC & LF



**DMD - 94** - 11/16" x 1 $\frac{1}{8}$ "  
O,POP 8', 12' PC

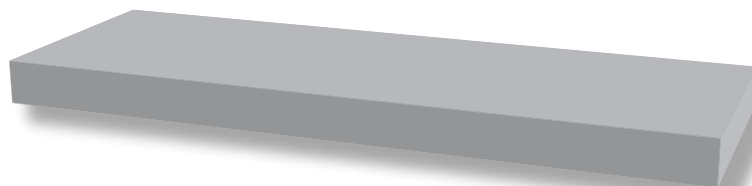
# Miscellaneous

## Mullion Casing



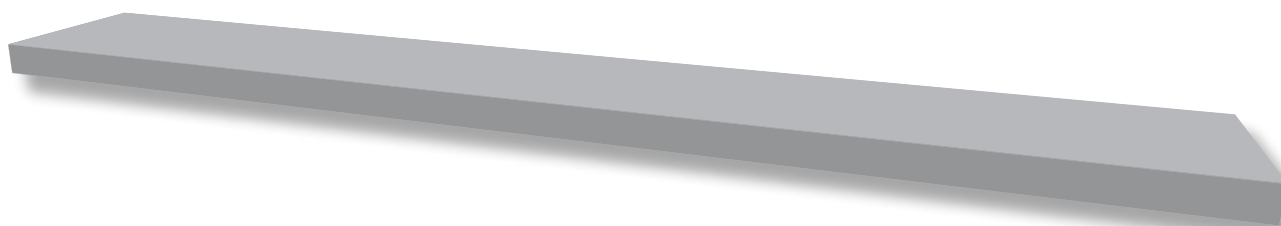
**DMD - 962** - 3/16" x 2"  
**M** LF  
**O** 8' PC & LF  
**POP** 7' PC

**DMD - 962** - 1/4" x 2"  
**FJPOP** 16' PC - *RTS*



**DMD - 960** - 1/4" x 4"  
**O** LF  
**POP** 8' PC

**DMD - 960** - 1/4" x 6"  
**POP** 10' PC - *RTS*



**DMD - 714** - 1/4" x 7 1/4"  
**M** 8' PC

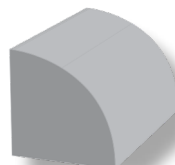
**DMD - 914** - 1/4" x 9 1/4"  
**M,O,POP** 10' PC

## Pediment Moulding



**DMD - 953** - 3/8" x 1 3/8"  
**POP** LF

## Quarter Round

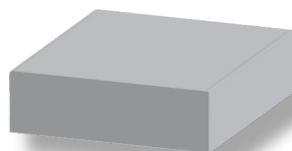


**DMD - 106** - 11/16" x 11/16"  
**O** 8', 12' PC

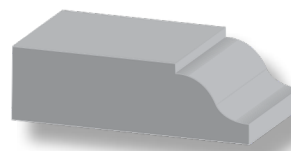
## Stop



**DMD - 887** - 3/8" x 1 1/4"  
**M,O,POP** 8' PC - *RTS*  
**M,O,POP** 6'-8" PC & LF



**DMD - 887LP** - 3/8" x 1 1/4"  
**FJP** 6'-8", 8' PC  
**FJP** 17' PC - *RTS*



**DMD - 947** - 3/8" x 1 1/4"  
**M,O,POP** 8' PC - *RTS*  
**M,O,POP** 6'-8" PC & LF

**DMD - 947P** - 3/8" x 1 1/4"  
**FJP,FJPOP** 16' PC - *RTS*

**M** - Maple  
**O** - Oak  
**POP** - Poplar  
**FJP** - FJ Primed Pine  
**FJPOP** - FJ Primed Poplar  
**MDF** - Ultra-Lite Primed MDF

PC - Pieces  
 LF - Lineal Foot  
*RTS* - Ready To Ship

# Boards

## Veneer - Boards



**DMD - F414 - Wood Core**

**1 x 10** -  $\frac{3}{4}$ " x  $9\frac{1}{4}$ "

**M** 16' PC

**M** 18' PC - *RTS*

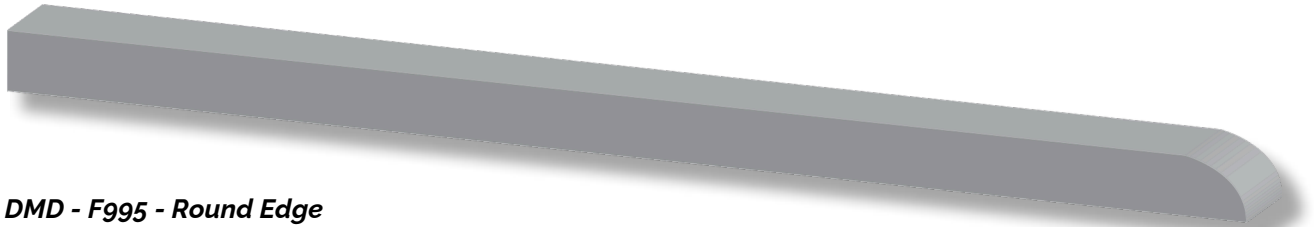
**O,POP** 16' & 18' PC

**DMD - F416 - Wood Core**

**1 x 12** -  $\frac{3}{4}$ " x  $11\frac{1}{4}$ "

**POP** 18' PC

## Veneer - Skirtboards



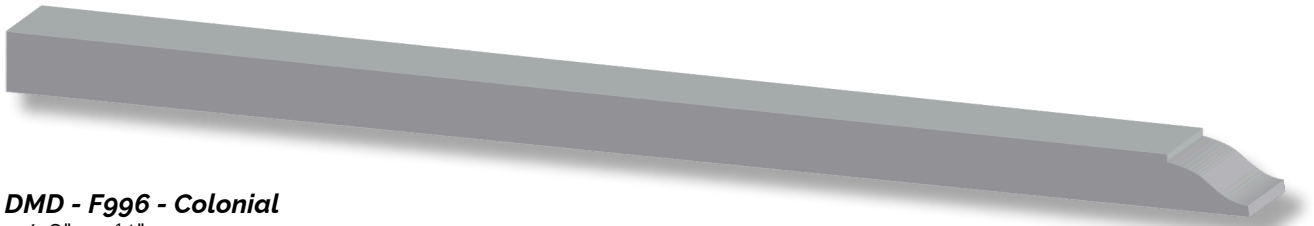
**DMD - F995 - Round Edge**

$\frac{7}{16}$ " x  $9\frac{1}{4}$ "

**M,O** 16' & 18' PC

**POP** 18' PC

**FJP** particle core 18' PC



**DMD - F996 - Colonial**

$\frac{7}{16}$ " x  $9\frac{1}{4}$ "

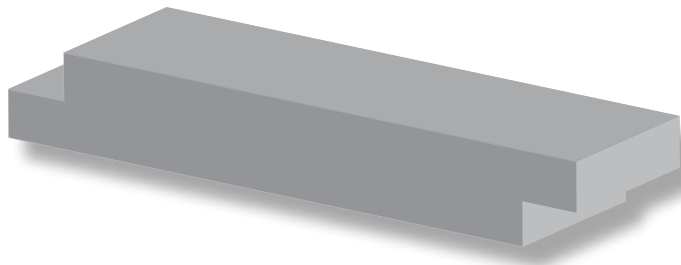
**M** 18' PC

**POP** 18' PC - *RTS*

**FJP** particle core 18' PC

# Boards

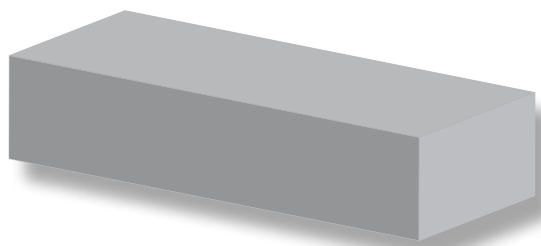
## Shiplap



**DMD - 1 x 6 -  $\frac{3}{4}$ " x 5 $\frac{1}{2}$ "**  
MDF 16' PC - RTS

**DMD - 1 x 8 -  $\frac{3}{4}$ " x 7 $\frac{1}{4}$ "**  
FJP,MDF 16' PC - RTS

## S4S Boards



**DMD - 1 x 2 -  $\frac{3}{4}$ " x 1 $\frac{1}{2}$ "**  
M,POP 4' - 16' lengths  
FJP 16' lengths

**DMD - 1 x 3 -  $\frac{3}{4}$ " x 2 $\frac{1}{2}$ "**  
POP 4' - 16' lengths

**DMD - 1 x 4 -  $\frac{3}{4}$ " x 3 $\frac{1}{2}$ "**  
M,O,POP 4' - 16' lengths  
FJP,MDF 16' lengths

**DMD - 1 x 5 -  $\frac{3}{4}$ " x 4 $\frac{5}{8}$ "**  
POP 4' - 16' lengths

**DMD - 1 x 6 -  $\frac{3}{4}$ " x 5 $\frac{1}{2}$ "**  
M,O,POP 4' - 16' lengths  
FJP,MDF 16' lengths

**DMD - 1 x 8 -  $\frac{3}{4}$ " x 7 $\frac{1}{4}$ "**  
M,O,POP 4' - 16' lengths  
FJP,MDF 16' lengths

**DMD - 1 x 10 -  $\frac{3}{4}$ " x 9 $\frac{1}{4}$ "**  
M,O,POP 4' - 16' lengths  
FJP,MDF 16' lengths

**DMD - 1 x 12 -  $\frac{3}{4}$ " x 11 $\frac{1}{4}$ "**  
M,O,POP 4' - 16' lengths  
FJP,MDF 16' lengths

M - Maple  
O - Oak  
POP - Poplar  
FJP - FJ Primed Pine  
FJPOP - FJ Primed Poplar  
MDF - Ultra-Lite Primed MDF

PC - Pieces  
LF - Lineal Foot  
RTS - Ready To Ship