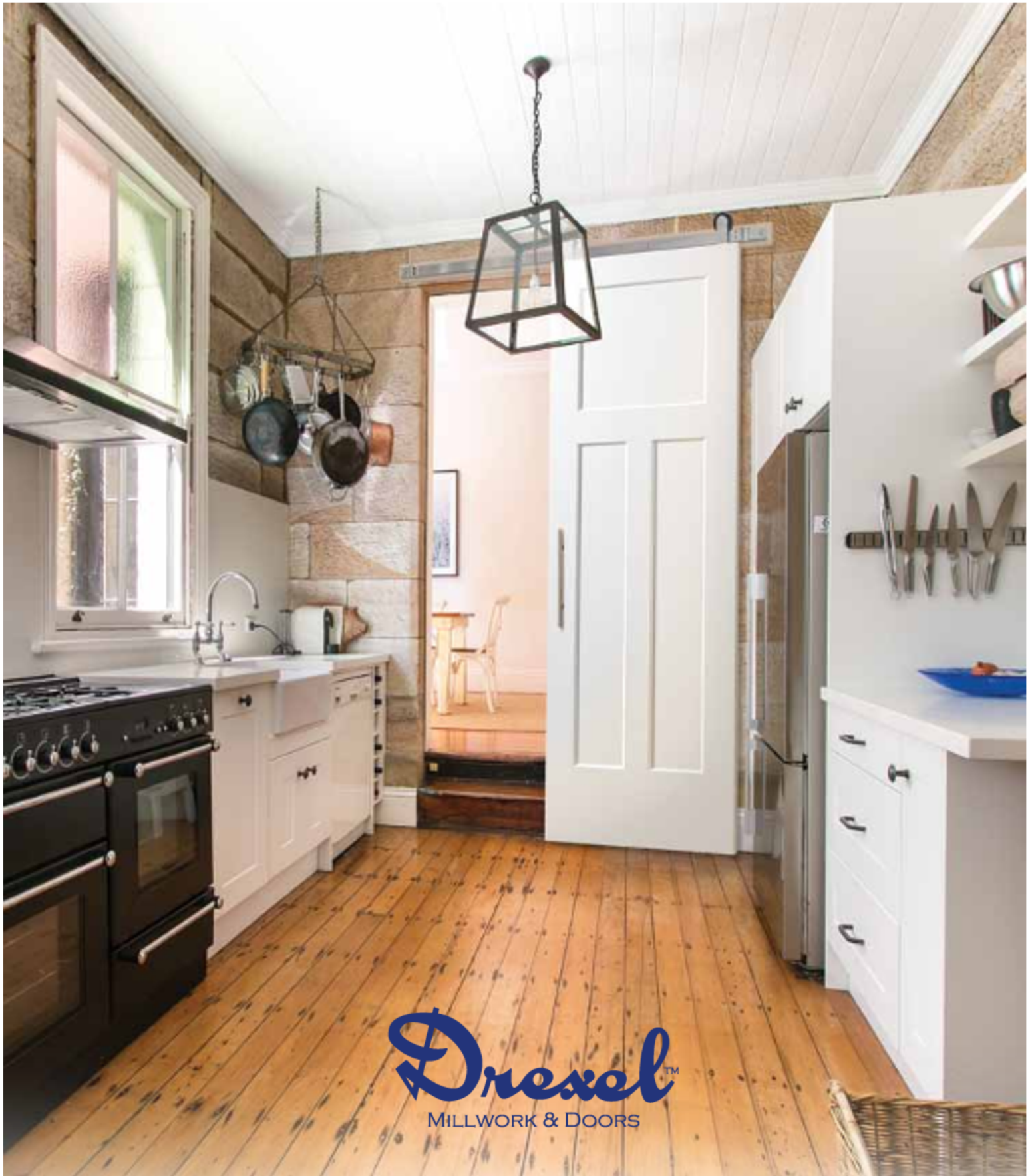


Interior Door Guide



DrexelTM
MILLWORK & DOORS

About Drexel Millwork & Doors



People don't buy WHAT you do. They buy WHY you do it.

HISTORY | Different from our competition, Drexel Millwork & Doors (DMD) launched vertical integration within Drexel Building Supply in 2022. From one location in 1985 to nine locations in 2023, our mission has stayed consistent: supply happiness.

WHY | Our "why" is aligned around two important things:

- 1. Our mission to supply. happiness.**
- 2. All eleven of our core values:**

**ETHICS | WINNING ATTITUDE | RESPECT | DEVELOPMENT | ACCOUNTABILITY |
BALANCE | TEAMWORK | COMMUNICATION | CHANGE | HAVE FUN | CONNECTION**

WHAT | From wood species, profiles, prefinishing options, and much, MUCH more, we'll help you find exactly what you're looking for.

supply. happiness.



**BDF-1000 Top Mount
Single Wheel**
Shown in Matte Black
RTH
Satin Nickel also Available



**BDF-1100 Face Mount
Strap Wheel**
Shown in Matte Black
RTH
Satin Nickel also Available



**BDF-1200 Face Mount
Bent Strap Wheel**
Shown in Matte Black
RTH
Satin Nickel also Available

- For use with $1\frac{3}{8}$ " - $1\frac{3}{4}$ " solid core doors.
- Maximum door weight is 165 lbs.
- Soft-close kit available for 1000, 1100 & 1200 Series Flat Tracks.
- Double Doors require two rail kits plus a Rail Joint part.

RTH - Ready To Hang

Trendy | Innovative | Functional

Molded Panel Series



**2-Panels Square
Top
Smooth
RTH**



**2-Panels
Roman
Smooth
RTH**



**6 -Panels
Smooth
RTH**



**Craftsman III™
Smooth
RTH**

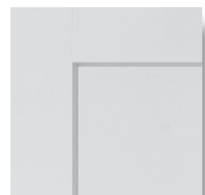


*Personalize your interior door
to reflect your unique style:*

2 & 6-Panel Square Top

2-Panel Roman

3-Panel Craftsman III



Simple | Traditional | Timeless

Classic



Cheyenne®
Smooth



Logan®
Smooth
RTH



Riverside®
Smooth



Feature lines distinguish the architectural correctness of authentic stile and rail wood doors.

Authentic | Diverse | Stylish

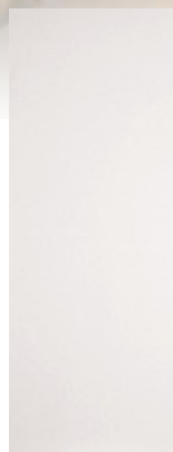
Flush Series



Birch
HC & SC
RTH



Red Oak
HC & SC
RTH



Primed Hardboard
HC & SC
RTH



- *A perfect option for small budget renovations.*
- *Offers the beauty and refinement of an authentic woodgrain finish.*
- *High-quality materials make doors easy to finish.*
- *Matching bifolds are available.*

Basic | Durable | Low Maintenance

Stile & Rail



1-Panel
#7910
RTH



2-Panels
#7920
RTH



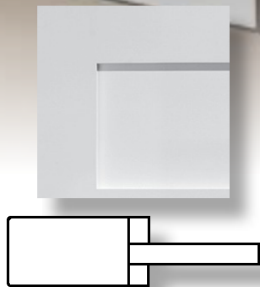
3-Equal Panels
#793H
RTH



3 -Panels
#793E
RTH



5-Panels
#795H
RTH



Shaker (Square)
3/8" Flat Panel

Mission style door designs are primed to allow for a better paint finish and color match process for any project.

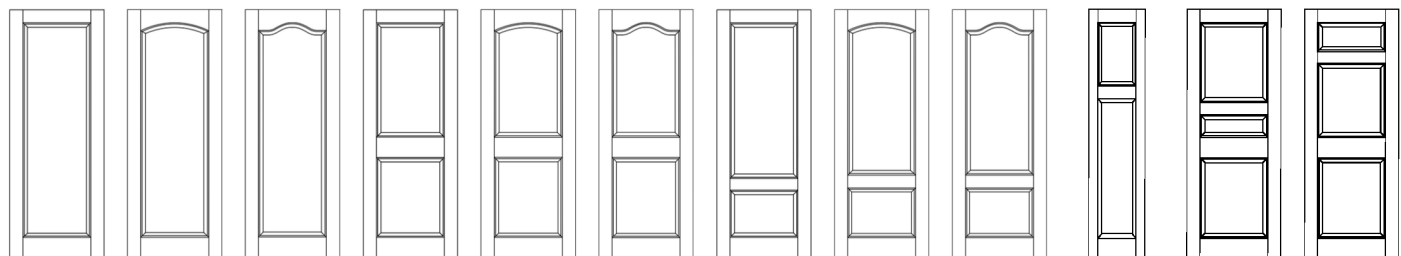
Interior applications are produced with MDF veneer and panels for superior paintability.

Matching bifolds are available.

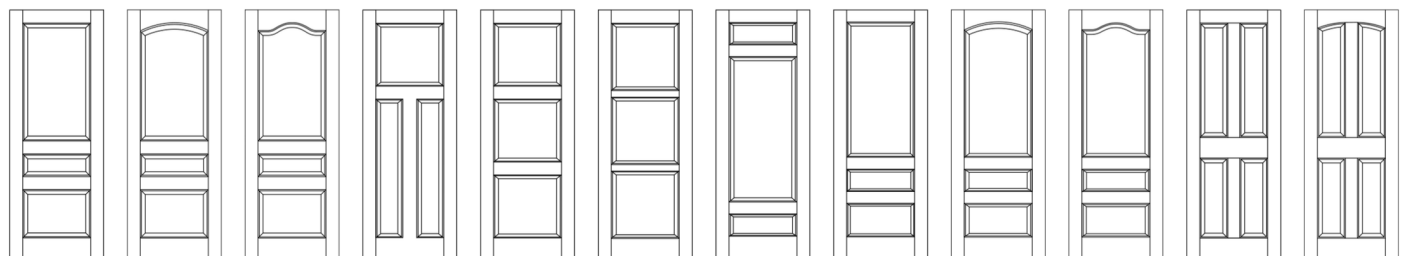
Mission Style | MDF Veneer | Wood Core

Stile & Rail

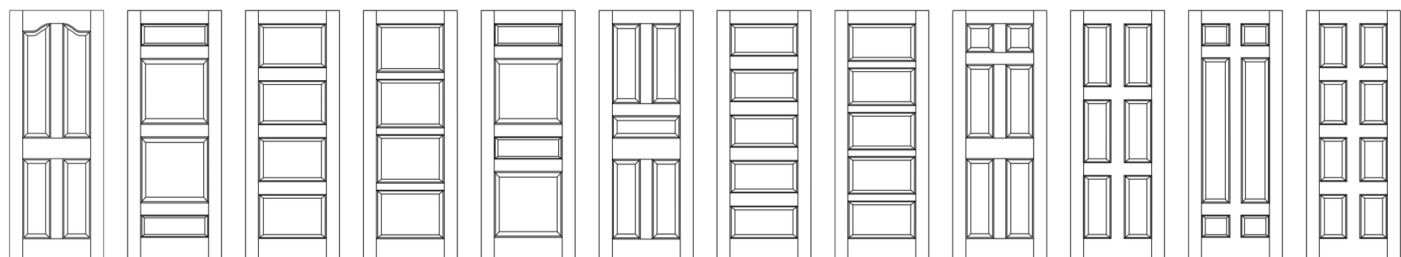
Special Order Primed Doors



1-Panel #2010 1/0-3/0	1-Panel #2010C 1/4-3/0	1-Panel #2010S 2/0-3/0	2-Panels #2020 1/0-3/0	2-Panels #2020C 1/4-3/0	2-Panels #2020S 2/0-3/0	2-Panels #202A 1/0-3/0	2-Panels #202AC 1/4-3/0	2-Panels #202AS 2/0-3/0	2-Panels #203E 1/0-1/10	3-Panels #2035 1/0-3/0	3-Panels #2036 1/0-3/0
------------------------------------	-------------------------------------	-------------------------------------	-------------------------------------	--------------------------------------	--------------------------------------	-------------------------------------	--------------------------------------	--------------------------------------	--------------------------------------	-------------------------------------	-------------------------------------



3-Panels #203A 1/0-3/0	3-Panels #203AC 1/4-3/0	3-Panels #203AS 2/0-3/0	3-Panels #203E 2/0-3/0	3-Panels #203H 1/0-3/0	3-Panels #203L 1/0-3/0	3-Panels #203T 1/0-3/0	3-Panels #203K 1/0-3/0	3-Panels #203KC 1/4-3/0	3-Panels #203KS 2/0-3/0	4-Panels #2040 2/0-3/0	4-Panels #2040C 2/0-3/0
-------------------------------------	--------------------------------------	--------------------------------------	-------------------------------------	-------------------------------------	-------------------------------------	-------------------------------------	-------------------------------------	--------------------------------------	--------------------------------------	-------------------------------------	--------------------------------------

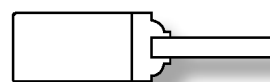


4-Panels #2040S 2/0-3/0	4-Panels #204F 1/0-3/0	4-Panels #204H 1/0-3/0	4-Panels #204L 1/0-3/0	4-Panels #204Z 1/0-3/0	5-Panels #2050 2/0-3/0	5-Panels #205H 1/0-3/0	5-Panels #205L 1/0-3/0	6-Panels #2060 2/0-3/0	6-Panels #206R 2/0-3/0	6-Panels #206T 2/0-3/0	8-Panels #2080 2/0-3/0
--------------------------------------	-------------------------------------	-------------------------------------	-------------------------------------	-------------------------------------	-------------------------------------	-------------------------------------	-------------------------------------	-------------------------------------	-------------------------------------	-------------------------------------	-------------------------------------



Louver/Louver #730 1 1/4" Slats RTH	Louver/Panel #732 1 1/4" Slats	Louver/Louver #P730 2 3/8" Slats	Louver/Panel #P732 2 3/8" Slats
--	---	---	--

These door styles are available in Ovolo Sticking with 3/8" thick flat panels or 5/8" thick raised panels. Please allow 3-4 weeks lead time.



Colonial (Ovolo)
3/8" Flat Panel

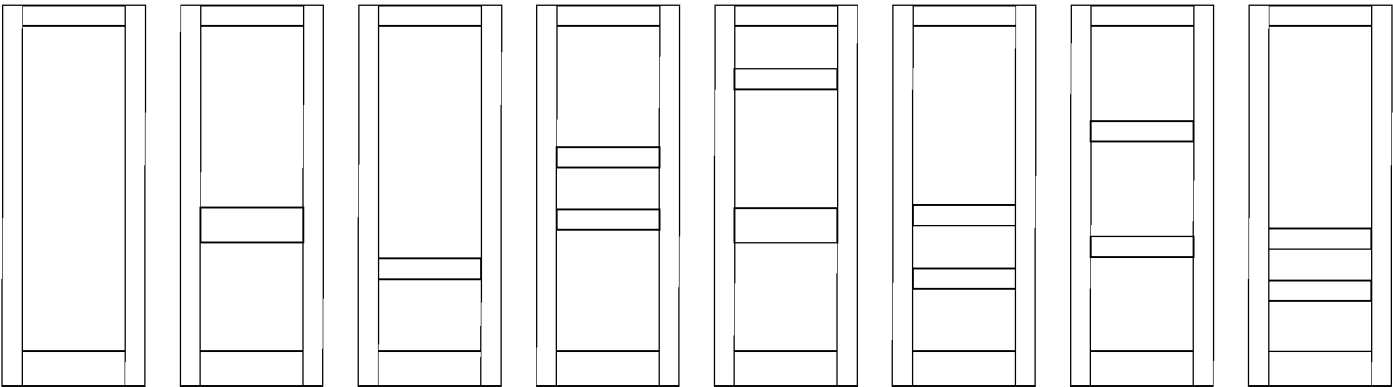


Colonial (Ovolo)
5/8" Raised Panel

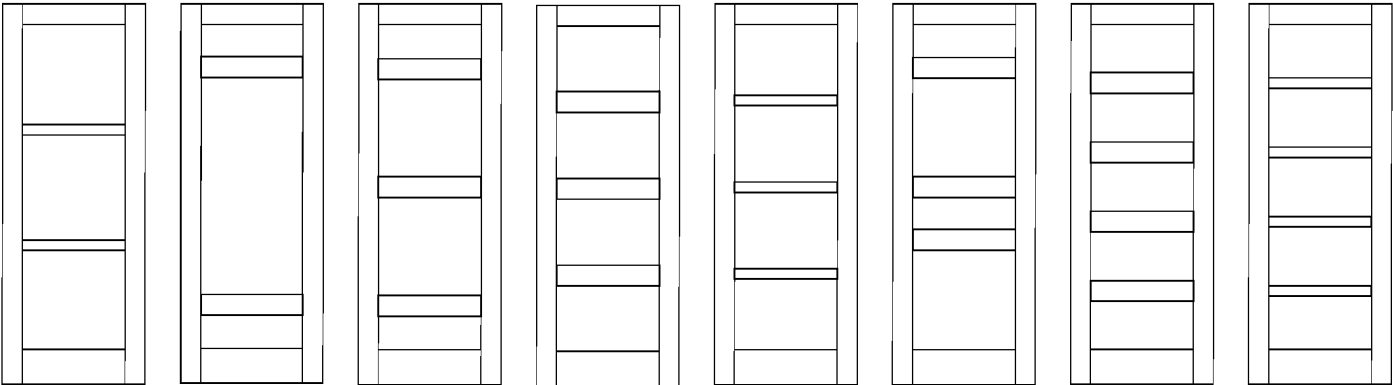
Primed louver doors are also available with a mirror backing. They are only available with 9/16" thick panels and Matching bifolds are block/tapered sticking. also available.

Primed | MDF Veneer | Ovolo Sticking

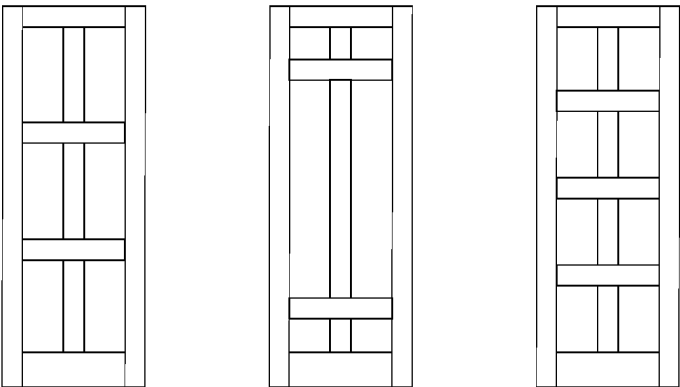
Special Order Primed Doors



1-Panel #7910 1/0-3/0	2-Panels #7920 1/0-3/0	2-Panels #792A 1/0-3/0	3-Panels #7935 1/0-3/0	3-Panels #7936 1/0-3/0	3-Panels #793A 1/0-3/0	3-Panels #793H 1/0-3/0	3-Panels #793K 1/0-3/0
--	---	---	---	---	---	---	---



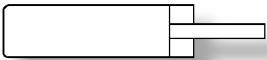
3-Panels #793L 1/0-3/0	3-Panels # 793 T 1/0-3/0	4-Panels #794F 1/0-3/0	4-Panels #794H 1/0-3/0	4-Panels #794L 1/0-3/0	4-Panels #794Z 1/0-3/0	5-Panels #795H 1/0-3/0	5-Panels #795L 1/4-3/0
---	---	---	---	---	---	---	---



6-Panels #796R 2/0-3/0	6-Panels #796T 2/0-3/0	8-Panels #7980 2/0-3/0
---	---	---

These door styles are available in Shaker Sticking with 3⁄8" thick flat panels. Matching bifolds are also available.

Please allow 3-4 weeks lead time.

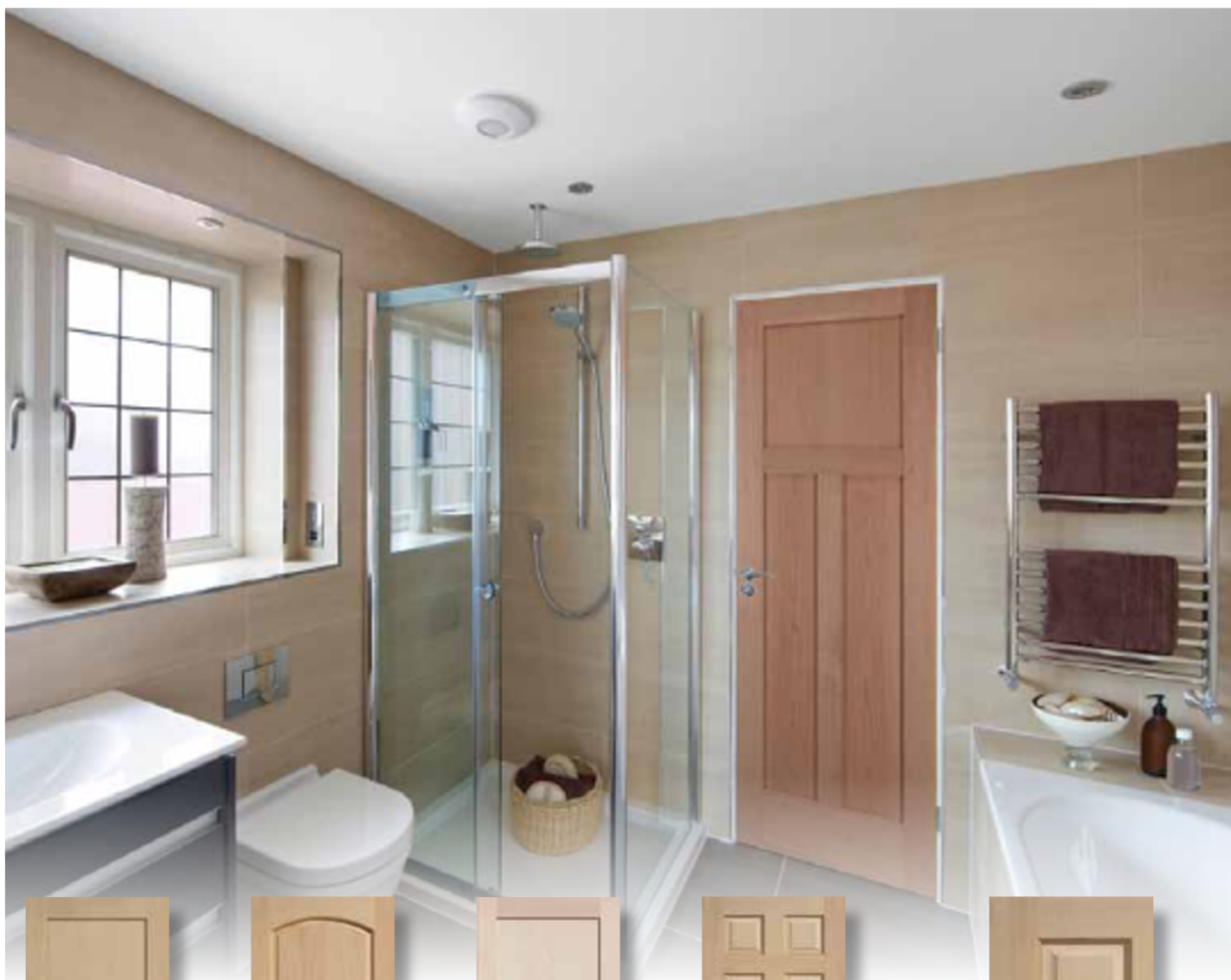


Shaker (Square)
3⁄8" Flat Panel



New
Shaker E-Sticking
3⁄8" Flat Panel

Primed | MDF Veneer | Shaker Sticking



**2-Panels
Flat
#4102
RTH**



**2-Panels
Raised
#802**



**3 -Panels
Flat
#4103T
RTH**



**6 Panels
Raised
#108**



Maple grows in the Eastern United States, offers a very fine grain and a whitish color tinged with redish brown.

Natural | Beautiful | Fine Grain

Red Oak Doors



**2-Panels
Raised
#802**



**2-Panels
Flat
#4102**



**3 -Panels
Flat
#4103T**



**4 -Panels
Raised
#106**



**6 -Panels
Raised
#108
RTH**



Hard and heavy, Oak grows mainly in the North Central United States. With a coarse texture and a straight, prominent grain, oak accepts a broad range of stains and finishes.

Natural | Beautiful | Hardwood

Stile & Rail

Poplar Flat Panel Doors



**1-Panel
Flat
#4020**



**2-Panels
Flat
#4102
RTH**



**3-Panels
Flat
#4103T
RTH**



**3-Equal Panels
Flat
#4103**



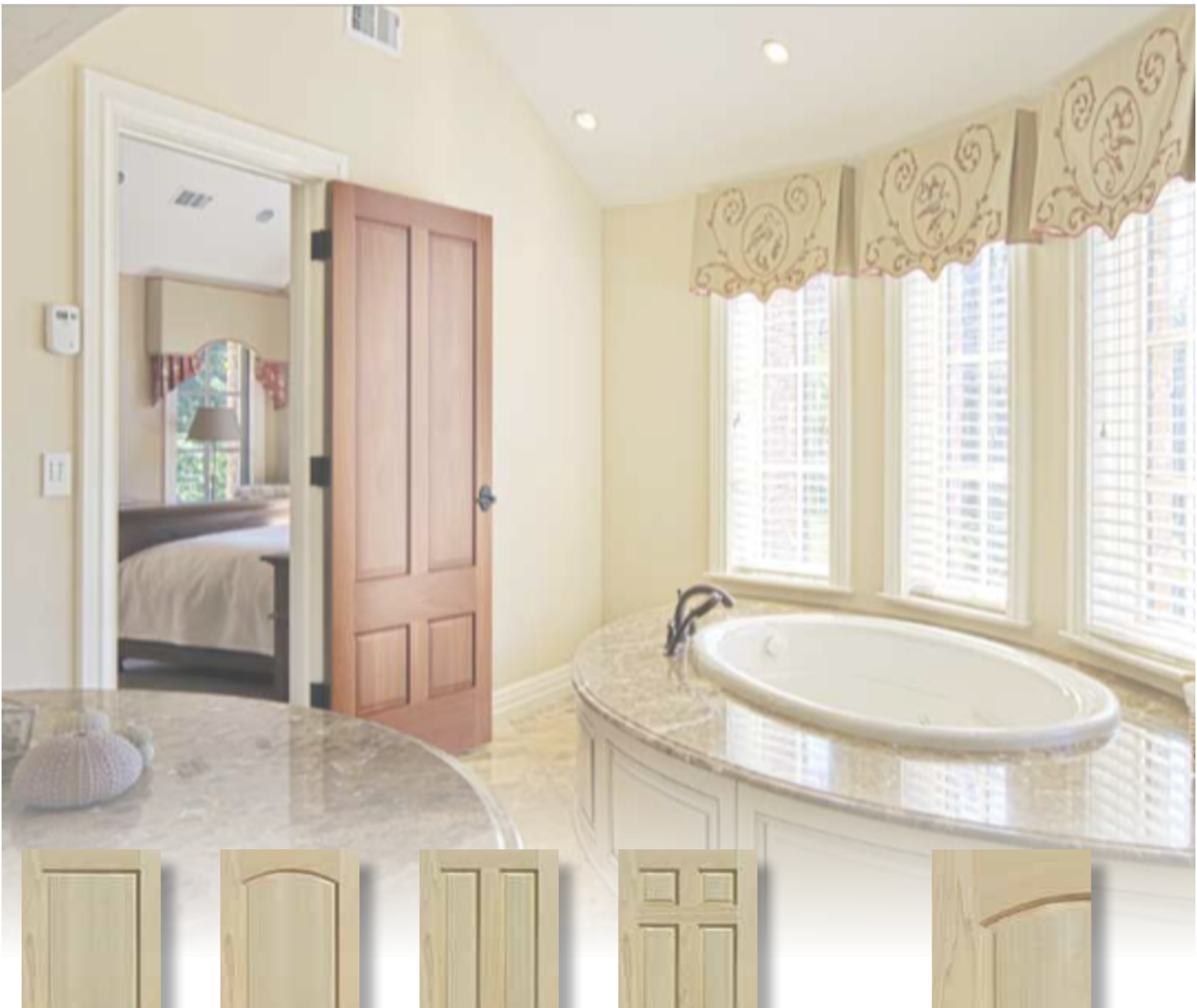
**5-Equal Panels
Flat
#4107**



Poplar grows in the Eastern United States. Colors of Poplar vary from brown to pale yellow to olive green.

Natural | Beautiful | Fine Texture

Poplar Raised Panel Doors



**2-Panels
Raised
#102**



**2-Panels
Raised
#802**



**4-Panels
Raised
#106**



**6-Panels
Raised
#108
RTH**



It is a medium density hardwood, generally straight-grained with a fine, even texture. Over time, the green color will darken with exposure to sunlight and may turn brown.

Natural | Beautiful | Fine Texture

Stile & Rail

Knotty Alder Flat Panel Doors



**2-Panels
Flat
#4102**

**3-Panels
Flat
#4103T**

**3-Equal Panels
Flat #4103**



**2-Panels
Planked
#102PLK**



**2-Panels
Planked
#802PLK**



**Z-Barn
Planked
#180Z**



**K-Barn
Planked
#181K**



Knotty Alder grows in the Pacific Northwest and is a medium density hardwood with an even grain appearance.

Natural | Beautiful | Even Grain

Knotty Alder Raised Panel Doors



**2-Panel
Raised
#102**



**2-Panel
Raised
#802**



The wood is normally light brown with hues of red or peach. Its softer nature makes it easy to machine and receptive to a variety of stains and finishes.

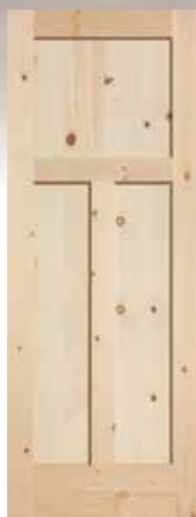
Natural | Beautiful | Even Grain



**2-Panels
Planked
#102 PLK**



**2-Panels
Planked
#802 PLK**



**3-Panels
Flat
#4103T**



**6-Panels
Raised
#108**



Radiata Pine is a plantation-grown wood from Chile, New Zealand and Australia. It has a distinctive grain pattern with a pale cream color. Radiata tends to be harder than other pine species and has fewer knots.

Natural | Beautiful | Distinctive Grain

Radiata Pine Doors



**2-Panels
Raised
#102**



**4-Panels
Raised
#106**



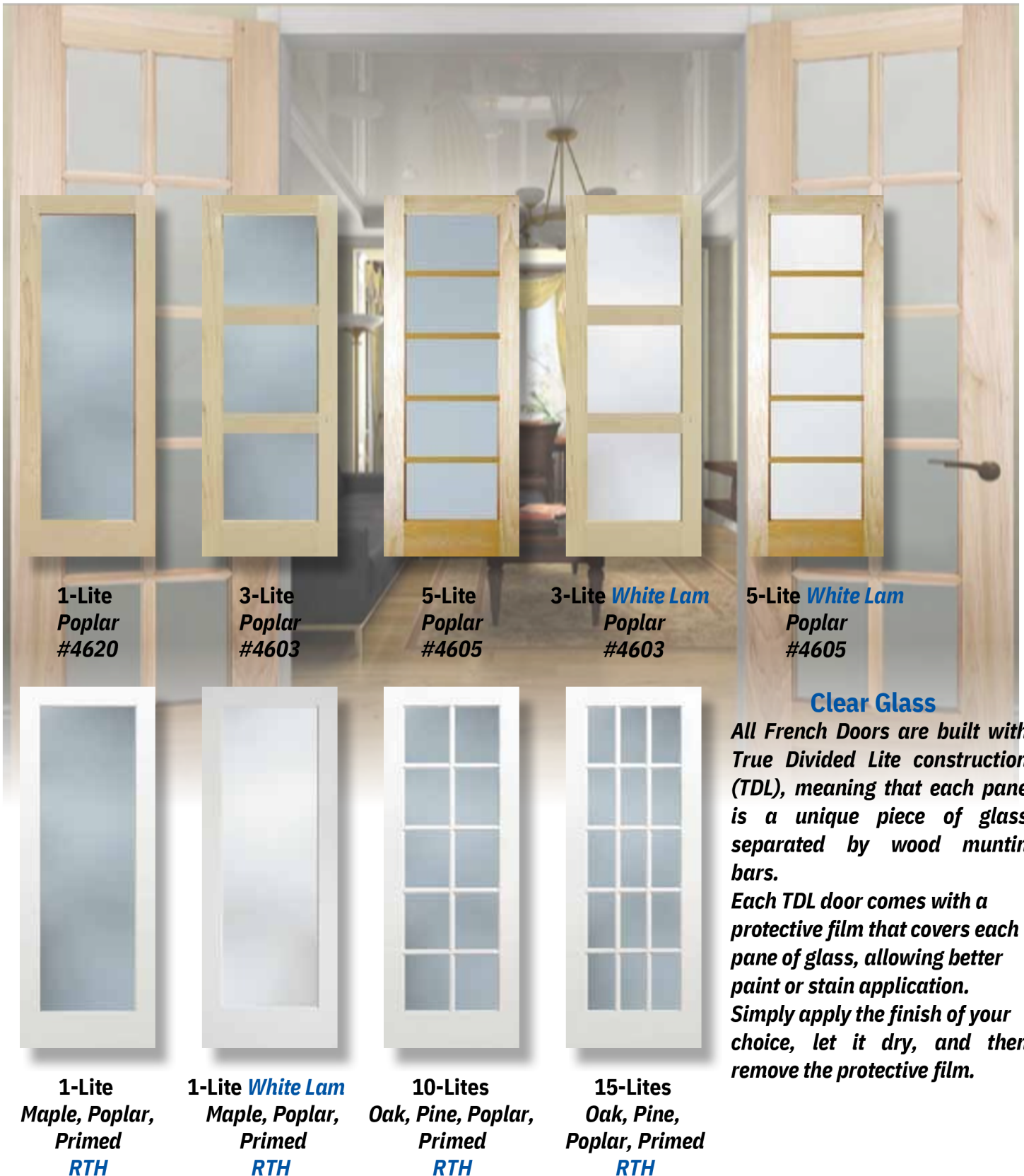
**6 -Panels
Raised
#108
RTH**



Radiata Pine is a plantation-grown wood from Chile, New Zealand and Australia. It has a distinctive grain pattern with a pale cream color. Radiata tends to be harder than other pine species and has fewer knots.

Natural | Beautiful | Distinctive Grain

French Doors



Elegance | Warmth | Beauty

French Door Glass Options

Not all sizes or glass options are available in all styles or species.



Artique



Beveled



Charcoal Sticks



Clear



Cotswold



Delta Frost



Frosted (Frit)



Glue Chip



Heavy Water



Mirror



Narrow Reed



Obscure



Rain



Ribbed



Seedy



Tafetta



V-Grooved



White Laminated



#42 Clear

Decorative | Flexible | Unique

Stock Doors & Sizes at DMD

Door Style	Passage Doors											Bifold Doors		
MOLDED PANEL DOORS - HC & SC	1/4	1/6	1/8	1/10	2/0	2/2	2/4	2/6	2/8	2/10	3/0	2/0 BF	2/6 BF	3/0 BF
2-Panel Square Top - Smooth Hollow Core - 6/8 x 1 $\frac{3}{8}$ " 2-	•	•	•	•	•	•	•	•	•	•	•	•	•	•
Panel Roman - Smooth Hollow Core - 6/8 x 1 $\frac{3}{8}$ " 6-Panel -		•			•	•	•	•	•	•	•	•	•	•
Smooth Hollow Core - 6/8 x 1 $\frac{3}{8}$ "	•	•	•	•	•	•	•	•	•	•	•	•	•	•
Craftsman III - Molded Hollow Core - 6/8 x 1 $\frac{3}{8}$ "	•	•	•		•	•	•	•	•	•	•	•	•	•
2-Panel Square Top - Smooth Solid Core - 6/8 x 1 $\frac{3}{8}$ "	•	•	•	•	•	•	•	•	•	•	•			
**7/0 x 1 $\frac{3}{8}$ " **		•	•		•	•	•	•	•	•	•			
**8/0 x 1 $\frac{3}{4}$ " **		•	•		•	•	•	•	•	•	•			
2-Panel Roman - Smooth Solid Core - 6/8 x 1 $\frac{3}{8}$ "	•	•	•		•	•	•	•	•	•	•			
6-Panel - Smooth Solid Core - 6/8 x 1 $\frac{3}{8}$ "	•	•	•		•	•	•	•	•	•	•			
Craftsman III - Molded Solid Core - 6/8 x 1 $\frac{3}{8}$ "	•	•	•		•		•	•	•	•	•			
Logan - Smooth Solid Core - 6/8 x 1 $\frac{3}{8}$ "		•			•		•	•	•		•			

Door Style	Passage Doors											Bifold Doors		
FLUSH SERIES DOORS	1/4	1/6	1/8	1/10	2/0	2/2	2/4	2/6	2/8	2/10	3/0	2/0 BF	2/6 BF	3/0 BF
Birch - Flush Hollow Core - 6/8 x 1 $\frac{3}{8}$ "		•	•		•		•	•	•	•	•			
Birch Flush Solid Core - 6/8 x 1 $\frac{3}{8}$ "		•			•		•	•	•	•	•			
**6/8 x 1 $\frac{3}{4}$ " **										•	•			
Red Oak- Flush Hollow Core - 6/8 x 1 $\frac{3}{8}$ "		•	•		•		•	•	•	•	•	•	•	•
Red Oak Flush Solid Core - 6/8 x 1 $\frac{3}{8}$ "		•			•		•	•	•	•	•			
Primed Hardboard - Flush Hollow Core - 6/8 x 1 $\frac{3}{8}$ "		•		•	•	•	•	•	•	•	•	•	•	•
Primed Hardboard - Flush Solid Core - 6/8 x 1 $\frac{3}{8}$ "		•			•	•	•	•	•	•	•			

Door Style	Passage Doors											Bifold Doors		
PRIMED STILE AND RAIL DOORS	1/4	1/6	1/8	1/10	2/0	2/2	2/4	2/6	2/8	2/10	3/0	2/0 BF	2/6 BF	3/0 BF
1-Panel - #7910 - 6/8 x 1 $\frac{3}{8}$ "		•			•	•	•	•	•	•	•	•	•	•
**7/0x1 $\frac{3}{8}$ " **		•			•		•	•	•	•	•			
**8/0x1 $\frac{3}{4}$ " **		•			•		•	•	•	•	•			
2-Panel - #7920 - 6/8 x 1 $\frac{3}{8}$ "		•	•		•	•	•	•	•	•	•	•	•	•
**7/0x1 $\frac{3}{8}$ " **		•			•		•	•	•	•	•			
**8/0x1 $\frac{3}{4}$ " **		•			•		•	•	•	•	•			
3-Panel - #793E - 6/8 x 1 $\frac{3}{8}$ "		•	•		•		•	•	•	•	•	•	•	•
3-Panel - #793H - 6/8 x 1 $\frac{3}{8}$ "		•			•		•	•	•	•	•	•	•	•
5-Panel - #795H - 6/8 x 1 $\frac{3}{8}$ "		•			•		•	•	•	•	•			

Stock Doors & Sizes at DMD

Door Style												Passage Doors												Bifold Doors					
MAPLE STILE AND RAIL DOORS												1/4	1/6	1/8	1/10	2/0	2/2	2/4	2/6	2/8	2/10	3/0	2/0 BF 2/6 BF 3/0 BF						
2-Panel Flat - #4102 - 6/8 x 1⅜"													•			•		•	•	•		•							
3-Panel Flat - #4103T - 6/8 x 1⅜"													•			•		•	•	•		•							
OAK STILE AND RAIL DOORS												1/4	1/6	1/8	1/10	2/0	2/2	2/4	2/6	2/8	2/10	3/0	2/0 BF 2/6 BF 3/0 BF						
6-Panel Raised - #108 - 6/8 x 1⅜"													•			•		•	•	•	•	•	• • •						
PINE DOORS												1/4	1/6	1/8	1/10	2/0	2/2	2/4	2/6	2/8	2/10	3/0	2/0 BF 2/6 BF 3/0 BF						
6-Panel Raised - #108 - 6/8 x 1⅜"													•			•		•	•	•		•							
POPLAR STILE AND RAIL DOORS												1/4	1/6	1/8	1/10	2/0	2/2	2/4	2/6	2/8	2/10	3/0	2/0 BF 2/6 BF 3/0 BF						
2-Panel Flat - #4102 - 6/8 x 1⅜"													•			•		•	•	•		•							
3-Panel Flat - #4103T - 6/8 x 1⅜"												•	•	•		•		•	•	•	•	•	• • •						
6-Panel Raised - #108 - 6/8 x 1⅜"													•	•		•	•	•	•	•	•	•							

Door Style				Passage Doors								Bifold Doors		
FRENCH DOORS	1/4	1/6	1/8	1/10	2/0	2/2	2/4	2/6	2/8	2/10	3/0	2/0 BF	2/6 BF	3/0 BF
1-Lite <i>Primed</i> - Clear - 6/8 x 1⅜"					•			•	•		•			
1-Lite <i>Primed</i> - White Laminated - 6/8 x 1⅜"					•			•	•		•			
10-Lite <i>Primed</i> - Clear - 6/8 x 1⅜"					•									
15-Lite <i>Primed</i> - Clear - 6/8 x 1⅜"								•	•		•			
1-Lite <i>Poplar</i> - Clear - 6/8 x 1⅜"					•			•	•		•			
1-Lite <i>Poplar</i> - White Laminated - 6/8 x 1⅜"					•			•	•		•			
10-Lite <i>Poplar</i> - Clear - 6/8 x 1⅜"					•									
15-Lite <i>Poplar</i> - Clear - 6/8 x 1⅜"								•	•		•			
1-Lite <i>Maple</i> - Clear - 6/8 x 1⅜"					•			•	•		•			
1-Lite <i>Maple</i> - White Laminated - 6/8 x 1⅜"					•			•	•		•			
10-Lite <i>Oak</i> - Clear - 6/8 x 1⅜"					•									
15-Lite <i>Oak</i> - Clear - 6/8 x 1⅜"								•	•		•			
10-Lite <i>Pine</i> - Clear - 6/8 x 1⅜"					•									
15-Lite <i>Pine</i> - Clear - 6/8 x 1⅜"								•	•		•			

Updated September 9, 2024

More Drexel Products



Exterior Doors



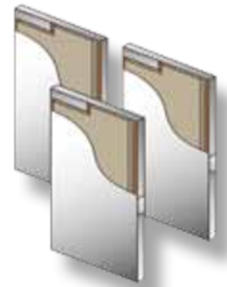
Stair Parts



Mouldings



Mantles



**Hollow Metal
Doors & Frames**

DrexelTM
MILLWORK & DOORS