

# Interior Door Guide



*Drexel*<sup>™</sup>



**People don't buy WHAT you do. They buy WHY you do it.**

**Different from our competition, Drexel launched vertical integration in 2022. From one location in 1985 to nine locations currently, our mission has stayed consistent: supply happiness.**

**WHY | Our "why" is aligned around two important things:**

- 1. Our mission to supply. happiness.**
- 2. All eleven of our core values:**

**ETHICS | WINNING ATTITUDE | RESPECT | DEVELOPMENT | ACCOUNTABILITY |  
BALANCE | TEAMWORK | COMMUNICATION | CHANGE | HAVE FUN | CONNECTION**

**WHAT | From wood species, profiles, prefinishing options, and much, MUCH more, we'll help you find exactly what you're looking for.**

**supply. happiness.**

# Species Expectations

## POPLAR

Poplar is characterized as a smooth, tight grain with a relatively soft texture. Because it is a fast-growing, columnar tree, it absorbs minerals from the soil differently than slower-growing hardwoods. It can range from creamy white to "mineral streaks" of olive green, purple, or dark brown/black. This is often called "Rainbow Poplar" and highlights the deep connection between the tree and its environment.



## MAPLE

Maple is a dense, heavy hardwood with a very subtle, typically uniform grain. The tree's wide-spreading branches and high density create a naturally tight grain and unique mineral streaks, which occur as the wood captures nutrients. While the appearance is usually consistent, you'll often find small dark spots or rare, decorative patterns like "birdseye" or "curly" figures.



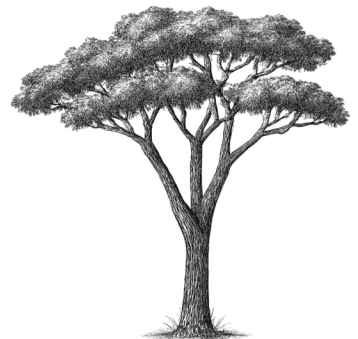
## RED OAK

Red Oak is known for its prominent, "open" grain pattern, extreme durability, wide, and high contrast. Expect significant tonal shifts and deep ridges that catch stain to highlight the wood's powerful, symmetrical growth and give Oak its "classic" furniture-grade reputation.



## KNOTTY ALDER

Alder is a smaller, more irregular tree compared to the others. It often grows in smaller clusters with a more slender, less formal trunk. Celebrated for its informal charm, Alder features frequent sound knots and pith marks. These are the natural signatures of a smaller, more irregular tree that brings warmth and texture to a space.



# Classic Collection

Our goal is to help you achieve a seamless and harmonious interior. By aligning our millwork factory finish options with a trusted cabinetry manufacturer's palette, we enable you to create a cohesive collection that blends your cabinetry, flooring, and millwork flawlessly. Our partnership ensures that we are always up to date with the latest trends. This allows us to provide you with on trend options that will keep your home looking stylish for years to come.

## STAIN

AVAILABLE IN POPLAR, MAPLE, OAK, KNOTTY ALDER



## PAINT



While this digital/printed guide serves as a beautiful starting point for your design journey, please note that screens and ink cannot perfectly replicate the depth, sheen, and organic texture of our factory-finished millwork. Light interacts differently with wood than it does with pixels. To ensure your vision matches your reality, we strongly recommend making your final color and species selections from the physical samples in one of our showrooms.

# Custom Creation

This service allows for a high degree of personalization, whether it's drawing inspiration from the extensive Sherwin-Williams color palette, or seeking to replicate an existing hue. The process is designed to ensure accuracy and satisfaction. Customers can provide a physical sample, such as a piece of trim or a color swatch, and skilled technicians will meticulously work to blend it, with up to two attempts if necessary. Physical samples are created to show how the living material of wood varies in grain and color under home lighting. We value precision. If the color is not achieved within two attempts, we will mutually agree to move in a different direction to protect project timelines.

For details and pricing, lean on your Drexel Quarterback for more information.



**BDF-1000 Top Mount  
Single Wheel**



**BDF-1100 Face  
Mount Strap Wheel**



**BDF-1200 Face Mount  
Bent Strap Wheel**

- For use with 1<sup>3</sup>/<sub>8</sub>" - 1<sup>3</sup>/<sub>4</sub>" solid core doors.
- Maximum door weight is 165 lbs.
- Soft-close kit available.



**F8114**



**FP-800**



**PL53**

**Barn Door Hardware Colors Available:**



**Satin Nickel**  
*RTS*



**Matte Black**  
*RTS*

*RTS - Ready To Ship*

**Trendy | Innovative | Functional**

Interior Door Guide © 2024 Drexel

# Molded Panel Series



**2-Panels Square**  
Top  
*Smooth*  
Raised  
*RTH*



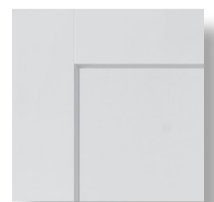
**2-Panels Roman**  
*Smooth*  
Raised  
*RTH*



**6-Panels**  
*Smooth*  
Raised  
*RTH*



**Craftsman III™**  
*Smooth*  
Flat  
*RTH*



# Classic



**2-Panels  
Plank Arched  
Smooth  
Raised**



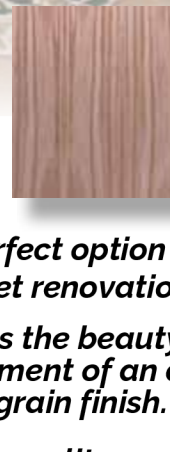
**2-Panels  
Smooth  
Flat  
*RTH***



**5-Panels  
Smooth  
Raised**

**Authentic | Diverse | Stylish**

# Flush Series



**Birch**  
HC & SC  
RTH

**Red Oak**  
HC & SC  
RTH

**Primed Hardboard**  
HC & SC  
RTH

- A perfect option for small budget renovations.
- Offers the beauty and refinement of an authentic woodgrain finish.
- High-quality materials make doors easy to finish.
- Matching bifolds are available.

**Basic | Durable | Low Maintenance**

# Stile & Rail



1-Panel  
#7910  
RTH



2-Panels  
#7920  
RTH



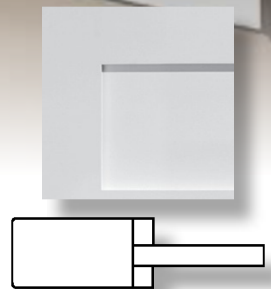
3-Equal Panels  
#793H  
RTH



3 -Panels  
#793E  
RTH



5-Panels  
#795H  
RTH



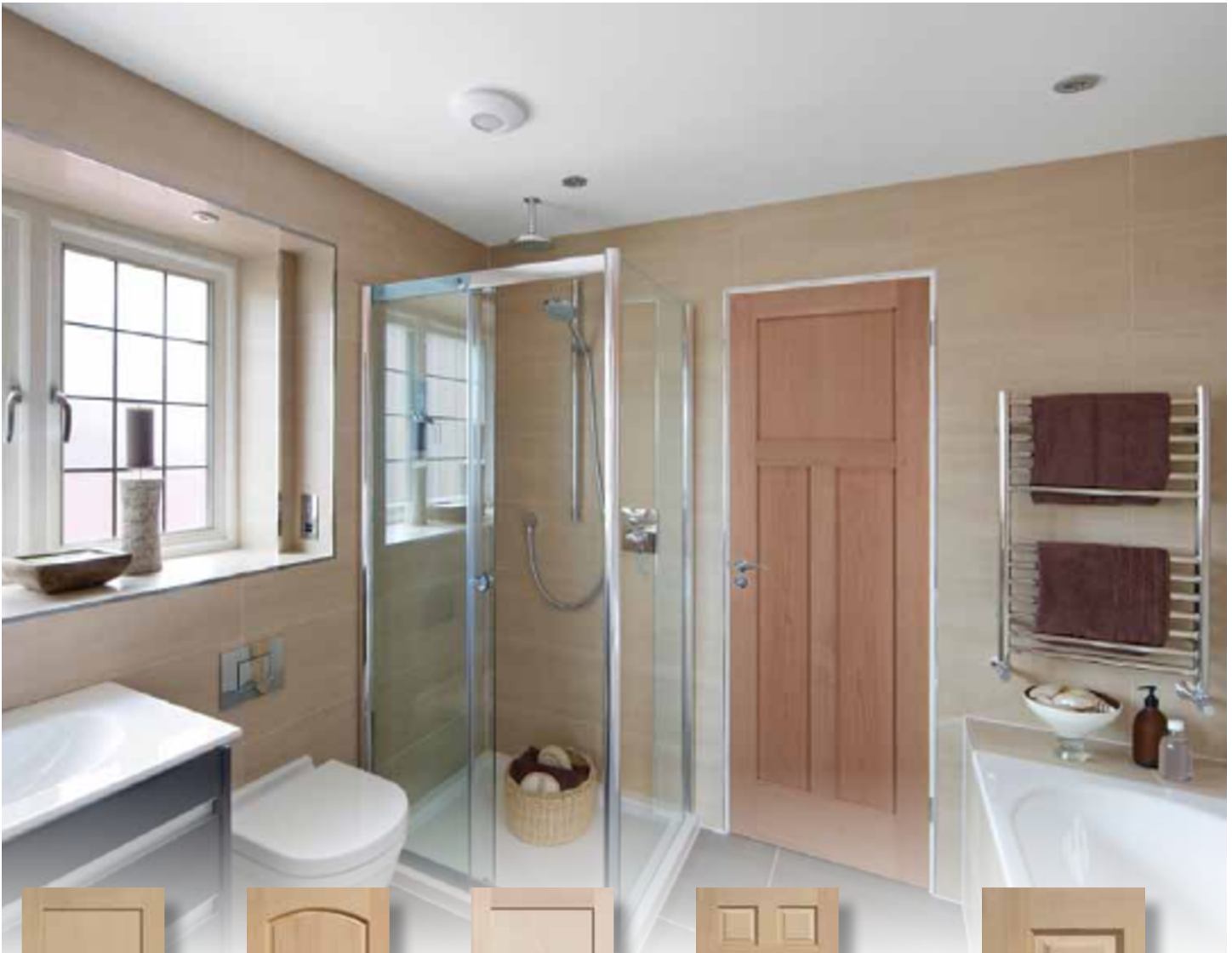
Shaker (Square)  
3/8" Flat Panel

*Mission style door designs are primed to allow for a better paint finish and color match process for any project.*

*Interior applications are produced with MDF veneer and panels for superior paintability.*

*Matching bifolds are available.*

## Mission Style | MDF Veneer | Wood Core



**2-Panels  
Flat  
#4102  
RTH**



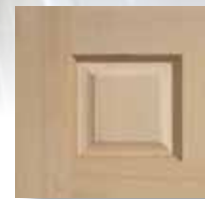
**2-Panels  
Raised  
#802**



**3 -Panels  
Flat  
#4103T  
RTH**



**6 Panels  
Raised  
#108**



*Maple grows in the Eastern United States, offers a very fine grain and a whitish color tinged with redish brown.*

**Natural | Beautiful | Fine Grain**

# Red Oak Doors



2-Panels  
Raised  
#802



2-Panels  
Flat  
#4102



3-Panels  
Flat  
#4103T



4-Panels  
Raised  
#106



6-Panels  
Raised  
#108  
*RTH*



*Hard and heavy, Oak grows mainly in the North Central United States. With a coarse texture and a straight, prominent grain, oak accepts a broad range of stains and finishes.*

**Natural | Beautiful | Hardwood**

# Stile & Rail

## Poplar Flat Panel Doors



*Poplar grows in the Eastern United States. Colors of Poplar vary from brown to pale yellow to olive green.*

**2-Panels**  
**Flat**  
**#4102**  
**RTH**

**3-Panels**  
**Flat**  
**#4103T**  
**RTH**

**3-Equal Panels**  
**Flat**  
**#4103**

**5-Equal Panels**  
**Flat**  
**#4107**

**Natural | Beautiful | Fine Texture**

# Poplar Raised Panel Doors



**2-Panels  
Raised  
#102**



**2-Panels  
Raised  
#802**



**4-Panels  
Raised  
#106**



**6-Panels  
Raised  
#108  
RTH**



*It is a medium density hardwood, generally straight-grained with a fine, even texture. Over time, the green color will darken with exposure to sunlight and may turn brown.*

**Natural | Beautiful | Fine Texture**

# Stile & Rail

## Knotty Alder Flat Panel Doors



**2-Panels  
Flat  
KA2TM  
RTH**



**3-Panels  
Flat  
KA3TM  
RTH**



**3-Equal Panels  
Flat  
#4103**



**2-Panels  
Planked  
#102PLK**



**2-Panels  
Planked  
#802PLK**



*Knotty Alder grows in the Pacific Northwest and is a medium density hardwood with an even grain appearance.*

**Natural | Beautiful | Even Grain**

# Knotty Alder Raised Panel Doors



**2-Panels  
Raised  
#102**



**2-Panels  
Raised  
#802**



*The wood is normally light brown with hues of red or peach. Its softer nature makes it easy to machine and receptive to a variety of stains and finishes.*

**Natural | Beautiful | Even Grain**

# French Doors

**1-Lite Poplar #4620**

**3-Lite Poplar #4603**

**5-Lite Poplar #4605**

**3-Lite *White Lam* Poplar #4603**

**5-Lite *White Lam* Poplar #4605**

**Clear Glass**

*All French Doors are built with True Divided Lite construction (TDL), meaning that each pane is a unique piece of glass separated by wood muntin bars.*

*Each TDL door comes with a protective film that covers each pane of glass, allowing better paint or stain application. Simply apply the finish of your choice, let it dry, and then remove the protective film.*

**1-Lite Maple, Poplar, Primed RTH**

**1-Lite *White Lam* Maple, Poplar, Primed RTH**

**10-Lites Oak, Poplar, Primed RTH**

**15-Lites Oak, Poplar, Primed RTH**

**Elegance | Warmth | Beauty**

# French Door Glass Options

*Not all sizes or glass options are available in all styles or species.*



**Artique**



**Beveled**



**Charcoal Sticks**



**Clear**



**Cotswold**



**Delta Frost**



**Frosted (Frit)**



**Glue Chip**



**Heavy Water**



**Mirror**



**Narrow Reed**



**Obscure**



**Rain**



**Ribbed**



**Seedy**



**Tafetta**



**V-Grooved**



**White Laminated**



**#42 Clear**

**Decorative | Flexible | Unique**

# Stock Doors & Sizes

Door Style	Passage Doors										
	1/4	1/6	1/8	1/10	2/0	2/2	2/4	2/6	2/8	2/10	3/0
<b>MOLDED PANEL DOORS - HC &amp; SC</b>											
2-Panel Square Top - Smooth Hollow Core - 6/8 x 1 <sup>3</sup> / <sub>8</sub> "	•	•	•	•	•	•	•	•	•	•	•
2-Panel Roman - Smooth Hollow Core - 6/8 x 1 <sup>3</sup> / <sub>8</sub> "		•			•	•	•	•	•	•	•
6-Panel - Smooth Hollow Core - 6/8 x 1 <sup>3</sup> / <sub>8</sub> "	•	•	•	•	•	•	•	•	•	•	•
Craftsman III - Molded Hollow Core - 6/8 x 1 <sup>3</sup> / <sub>8</sub> "	•	•	•		•	•	•	•	•	•	•
2-Panel Square Top - Smooth Solid Core - 6/8 x 1 <sup>3</sup> / <sub>8</sub> "	•	•	•	•	•	•	•	•	•	•	•
**7/0 x 1 <sup>3</sup> / <sub>8</sub> "**		•	•		•	•	•	•	•	•	•
**8/0 x 1 <sup>3</sup> / <sub>4</sub> "**		•	•		•	•	•	•	•	•	•
2-Panel Roman - Smooth Solid Core - 6/8 x 1 <sup>3</sup> / <sub>8</sub> "	•	•	•		•	•	•	•	•	•	•
6-Panel - Smooth Solid Core - 6/8 x 1 <sup>3</sup> / <sub>8</sub> "	•	•	•		•	•	•	•	•	•	•
Craftsman III - Molded Solid Core - 6/8 x 1 <sup>3</sup> / <sub>8</sub> "	•	•	•		•		•	•	•	•	•
Monroe Hollow and Solid Core - Smooth - 6/8 x 1 <sup>3</sup> / <sub>8</sub> "		•			•		•	•	•		•

Bifold Doors						
2/0 BF	2/6 BF	3/0 BF	4/0 BF	5/0 BF	6/0 BF	
•	•	•	•	•	•	
•	•	•	•	•	•	
•	•	•	•	•	•	
•	•	•	•	•	•	

Door Style	Passage Doors										
	1/4	1/6	1/8	1/10	2/0	2/2	2/4	2/6	2/8	2/10	3/0
<b>FLUSH SERIES DOORS</b>											
Birch - Flush Hollow Core - 6/8 x 1 <sup>3</sup> / <sub>8</sub> "		•	•		•		•	•	•	•	•
Birch Flush Solid Core - 6/8 x 1 <sup>3</sup> / <sub>8</sub> "		•			•		•	•	•	•	•
**6/8 x 1 <sup>3</sup> / <sub>4</sub> "**									•		•
Red Oak - Flush Hollow Core - 6/8 x 1 <sup>3</sup> / <sub>8</sub> "		•	•		•		•	•	•	•	•
Red Oak Flush Solid Core - 6/8 x 1 <sup>3</sup> / <sub>8</sub> "		•			•		•	•	•	•	•
Primed Hardboard - Flush Hollow Core - 6/8 x 1 <sup>3</sup> / <sub>8</sub> "		•		•	•	•	•	•	•	•	•
Primed Hardboard - Flush Solid Core - 6/8 x 1 <sup>3</sup> / <sub>8</sub> "		•			•	•	•	•	•	•	•

Bifold Doors						
2/0 BF	2/6 BF	3/0 BF	4/0 BF	5/0 BF	6/0 BF	
•	•	•	•	•	•	
•	•	•	•	•	•	

Door Style	Passage Doors										
	1/4	1/6	1/8	1/10	2/0	2/2	2/4	2/6	2/8	2/10	3/0
<b>PRIMED STILE AND RAIL DOORS</b>											
1-Panel - #7910 - 6/8 x 1 <sup>3</sup> / <sub>8</sub> "		•			•	•	•	•	•	•	•
**7/0x1 <sup>3</sup> / <sub>8</sub> "**		•			•		•	•	•	•	•
**8/0x1 <sup>3</sup> / <sub>4</sub> "**		•			•		•	•	•	•	•
2-Panel - #7920 - 6/8 x 1 <sup>3</sup> / <sub>8</sub> "		•	•		•	•	•	•	•	•	•
**7/0x1 <sup>3</sup> / <sub>8</sub> "**		•			•		•	•	•	•	•
**8/0x1 <sup>3</sup> / <sub>4</sub> "**		•			•		•	•	•	•	•
3-Panel - #793E - 6/8 x 1 <sup>3</sup> / <sub>8</sub> "		•	•		•		•	•	•	•	•
3-Panel - #793H - 6/8 x 1 <sup>3</sup> / <sub>8</sub> "		•			•		•	•	•	•	•
5-Panel - #795H - 6/8 x 1 <sup>3</sup> / <sub>8</sub> "		•			•		•	•	•	•	•

Bifold Doors						
2/0 BF	2/6 BF	3/0 BF	4/0 BF	5/0 BF	6/0 BF	
•	•	•	•	•	•	
•	•	•	•	•	•	
•	•	•	•	•	•	

